



Co-financed by the European Regional Development Fund

Inspire Policy Making with Territorial Evidence

// InTerAlp

Interface Territories across the Alpine region

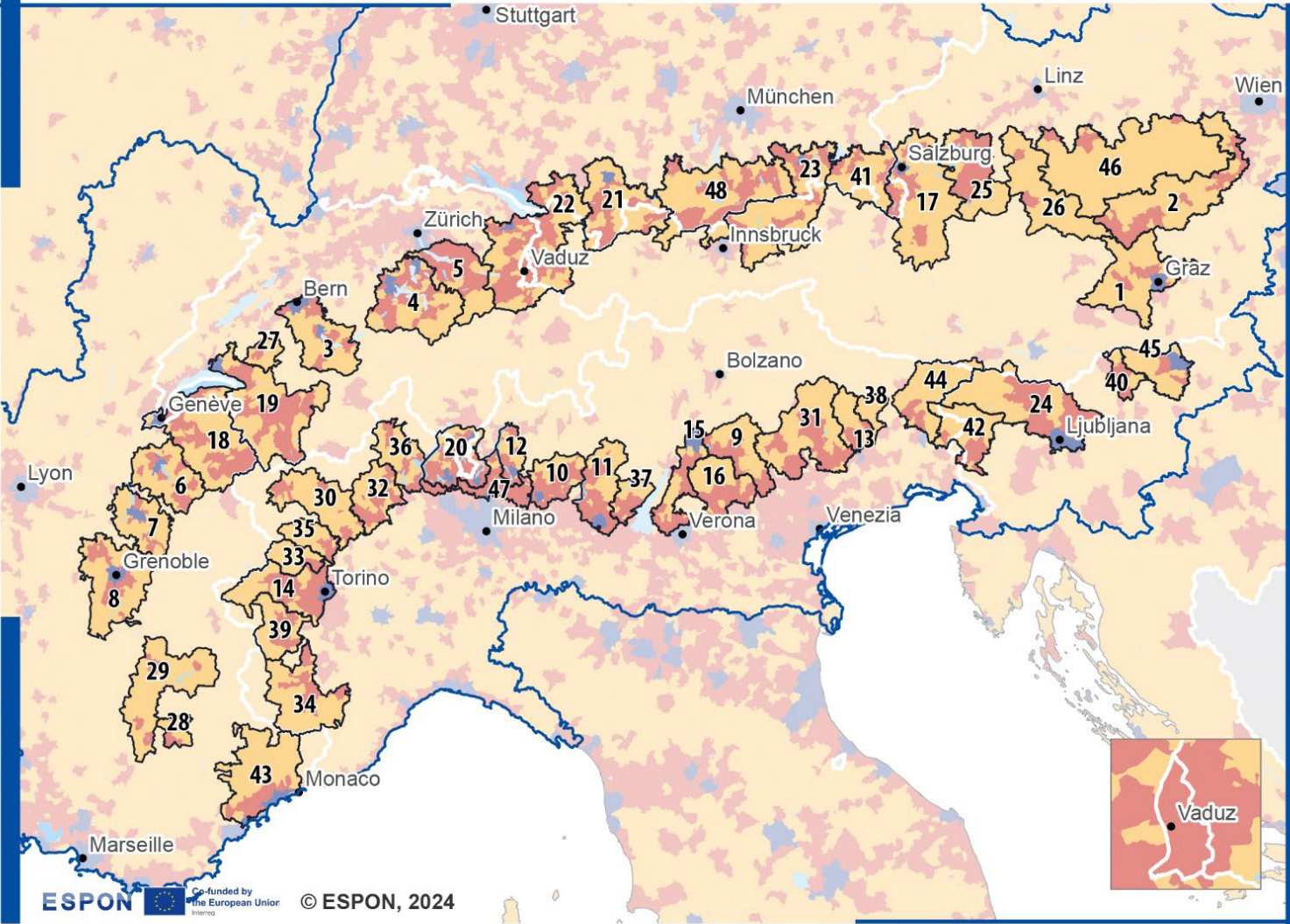
ESPON InTerAlp Policy Brief (DRAFT)
Cartographic annex



Photo: View to Garmisch-Partenkirchen (Elias Günther, 2024).

Interface territories across the Alpine region

This map is a draft version.



ESPON funded by the European Union © ESPON, 2024

Interface territories

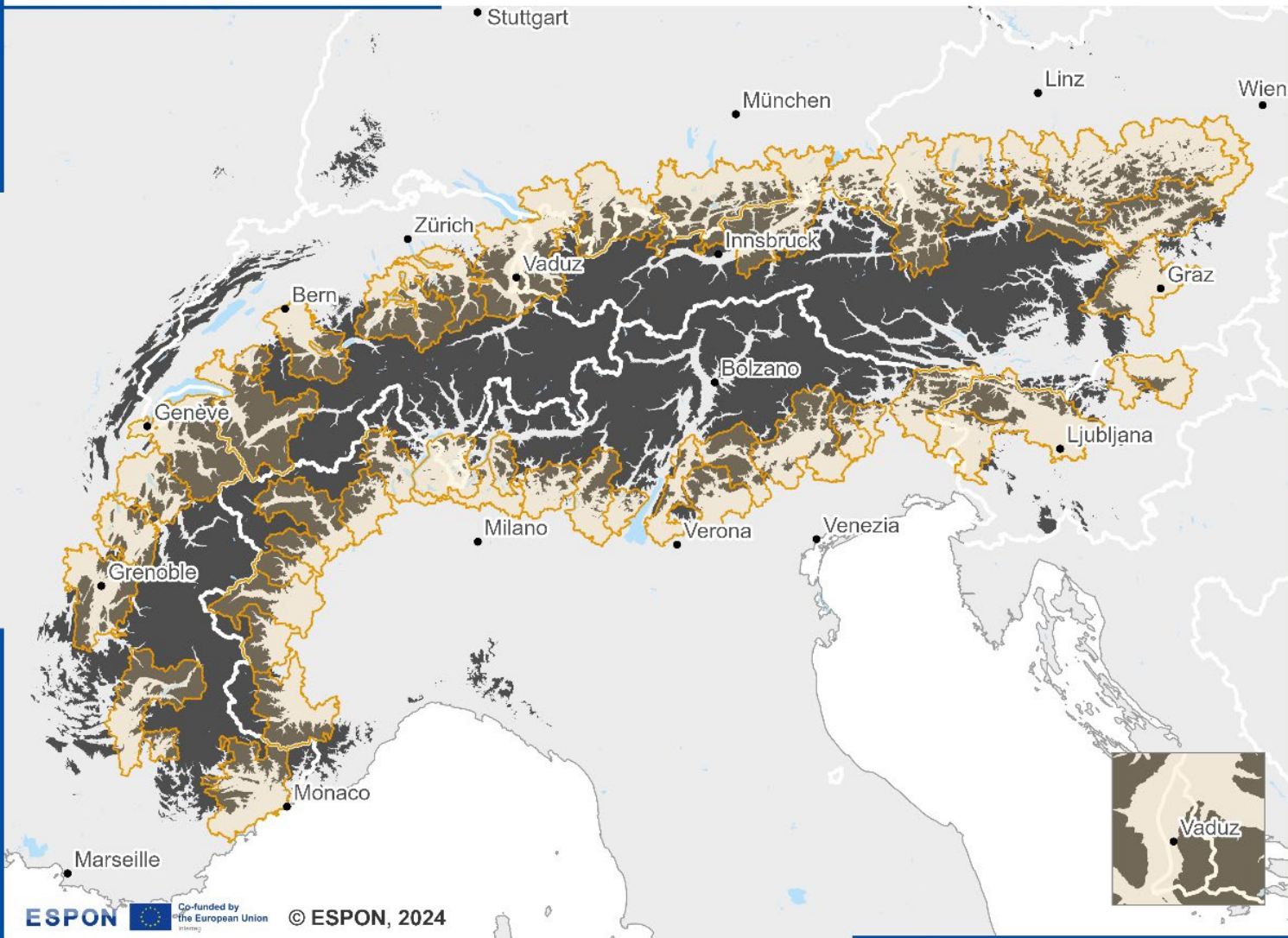
- Interface territories
- EUSALP

Degree of urbanisation (2020)

- Densely populated (cities or large urban areas)
- Intermediate populated (towns and suburbs or small urban areas)
- Thinly populated (rural)



Regional level: LAU 2021
 Source: ESPON InTerAlp, 2024
 Origin of data: Eurostat
 © EuroGeographics for administrative boundaries

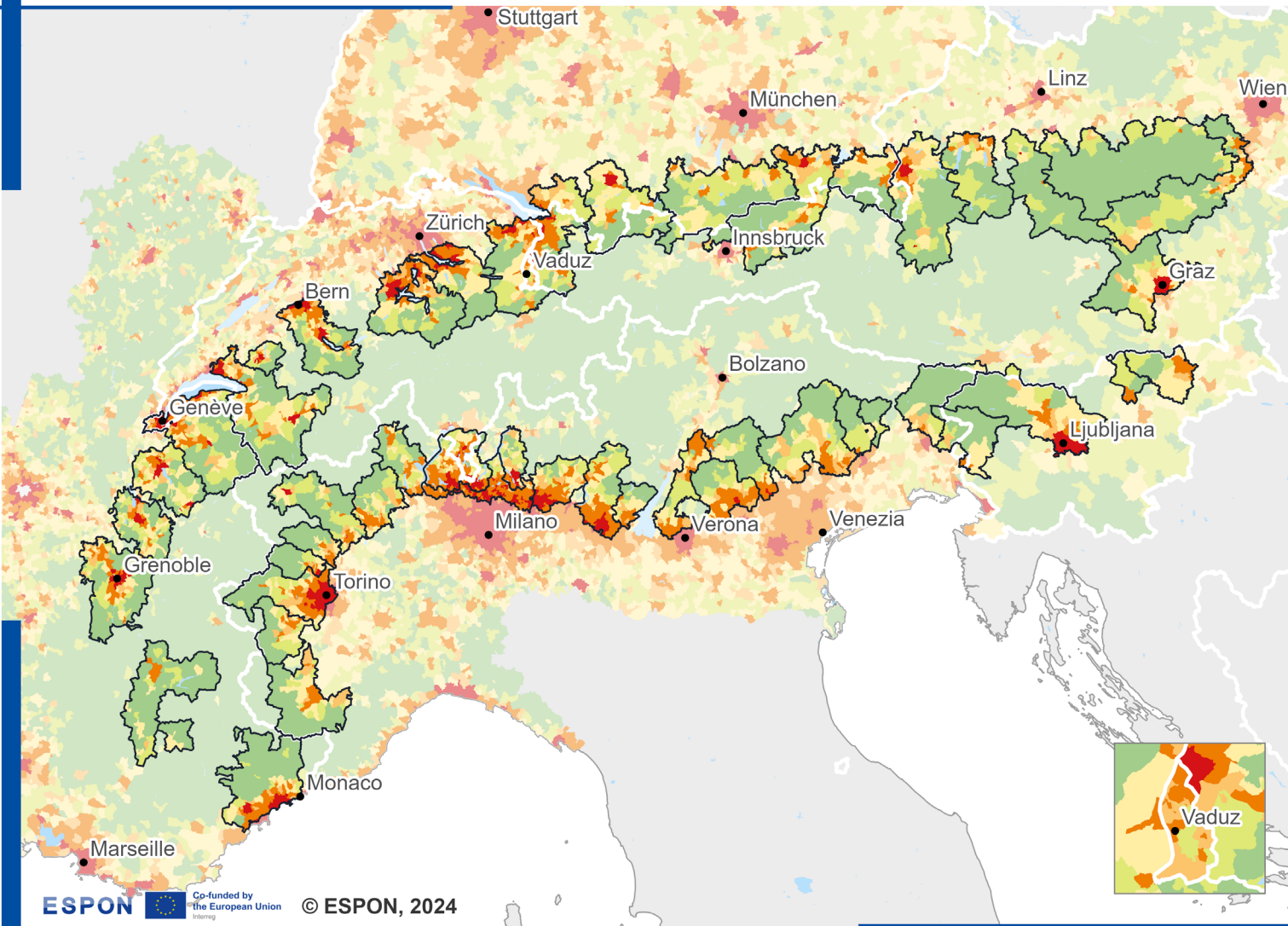
Interface territory	Core city	Semi-urbanized	Rural
(1) Graz (AT)	X		
(2) Vienna/Mürz Valley (AT)		X	
(3) Bern/Thun (CH)	X		
(4) Zug/Luzern (CH)	X		
(5) Zürich/Schwyz/Glarus (CH)		X	
(6) Annecy (FR)	X		
(7) Chambéry (FR)	X		
(8) Grenoble/Rhône-Alpes region (FR)	X		
(9) Bassano del Grappa (IT)			X
(10) Bergamo (IT)	X		
(11) Brescia (IT)	X		
(12) Lecco (IT)	X		
(13) Pordenone (IT)			X
(14) Turin (IT)	X		
(15) Trento (IT)	X		
(16) Vicenza/Schio (IT)		X	
(17) Salzburg (AT/DE)	X		
(18) Geneva/Annemasse/Thonon-les-Bains (CH/FR)	X		
(19) Rhone Valley (CH/FR)	X		
(20) Lugano (CH/IT)	X		
(21) Allgavia (DE/AT)	X		
(22) Alpine Rhine Valley (DE/CH/AT/LI)	X		
(23) Rosenheim (DE/AT)	X		
(24) Ljubljana/Julian Alps (SI/AT)	X		
(25) Gmunden (AT)		X	
(26) Liezen (AT)			X
(27) Bulle (CH)			X
(28) Digne-les-Bains (FR)			X
(29) Sisteron/Gap (FR)			X
(30) Aosta Valley (IT)			X
(31) Belluno/Piave Valley (IT)		X	
(32) Biella/Borgomanero (IT)		X	
(33) Ciriè (IT)			X
(34) Cuneo/Cottian Alps (IT)		X	
(35) Cuorgnè (IT)			X
(36) Domodossola (IT)		X	
(37) Gavardo/Salò (IT)		X	
(38) Maniago (IT)			X
(39) Pinerolo (IT)		X	
(40) Velenje (SI)		X	
(41) Bad Reichenhall/Berchtesgaden Alps (DE/AT)			X
(42) Gorizia/Nova Gorica (IT/SI)			X
(43) Nice (FR)	X		
(44) Udine (IT)			X
(45) Maribor (SI)	X		
(46) Vienna/Lower Austria fringe (AT)			X
(47) Milano fringe (IT)	X		
(48) Munich fringe (DE/AT)			X



ESPON  Co-funded by the European Union  © ESPON, 2024

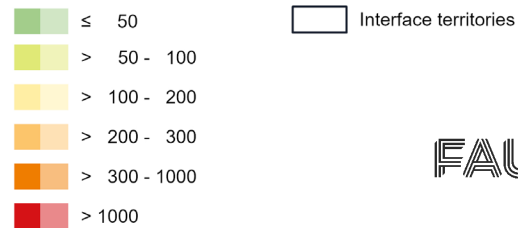
Source: ESPON InTerAlp, 2024
© EuroGeographics for administrative boundaries

-  Interface territories across the Alpine region
-  High altitude (≥1000m a.s.l.)



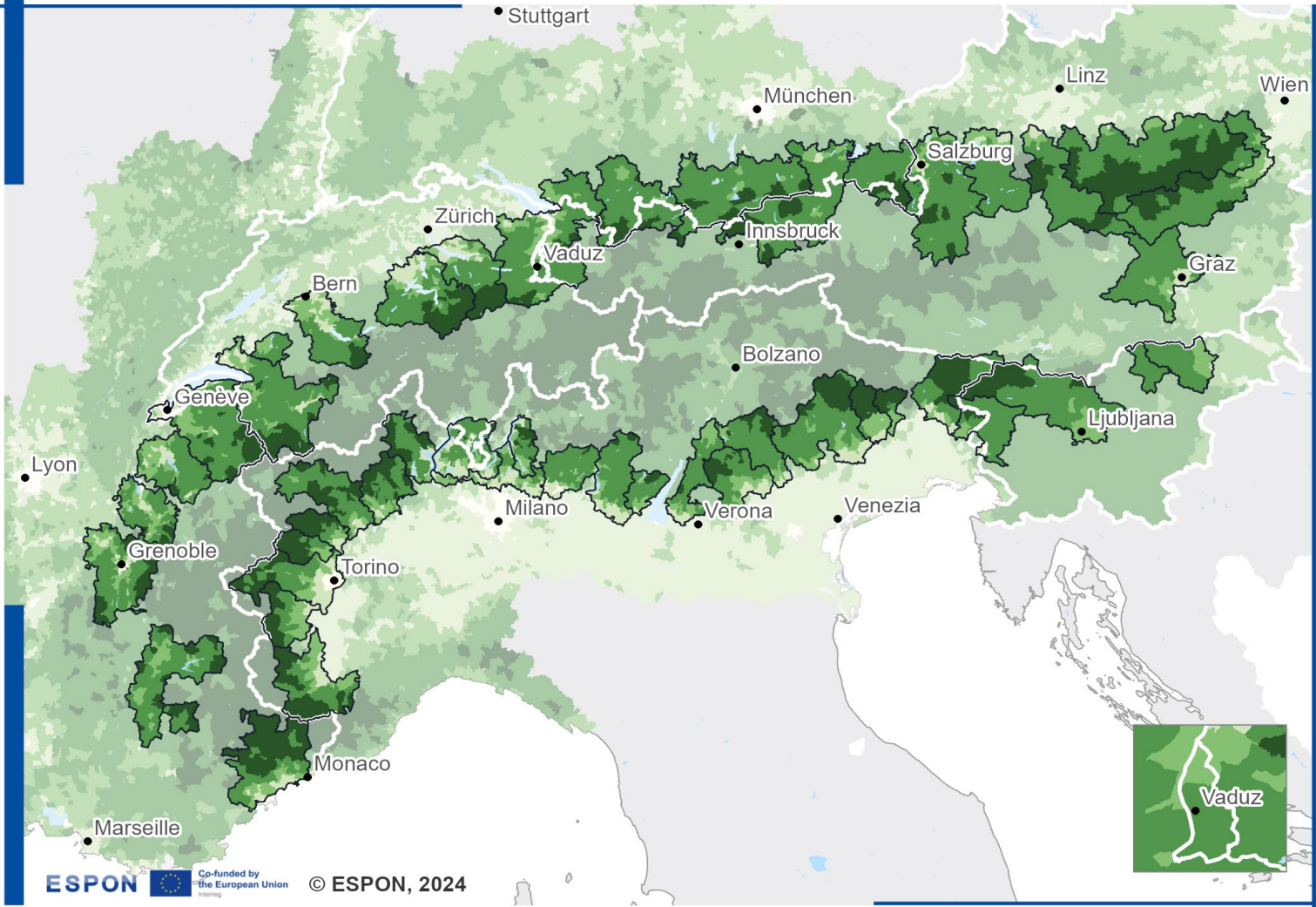
ESPON  Co-funded by the European Union Interreg © ESPON, 2024

Population density (inhabitants/km², 2023)



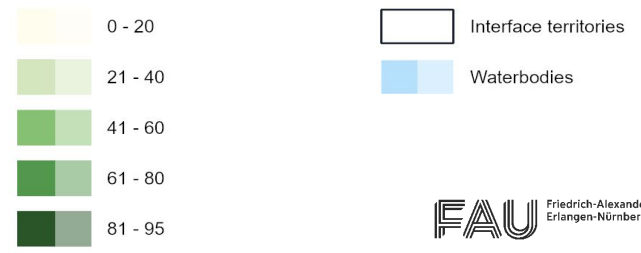
Regional level: LAU 2021
 Source: ESPON InTerAlp, 2024
 Origin of data: Eurostat

© EuroGeographics for administrative boundaries

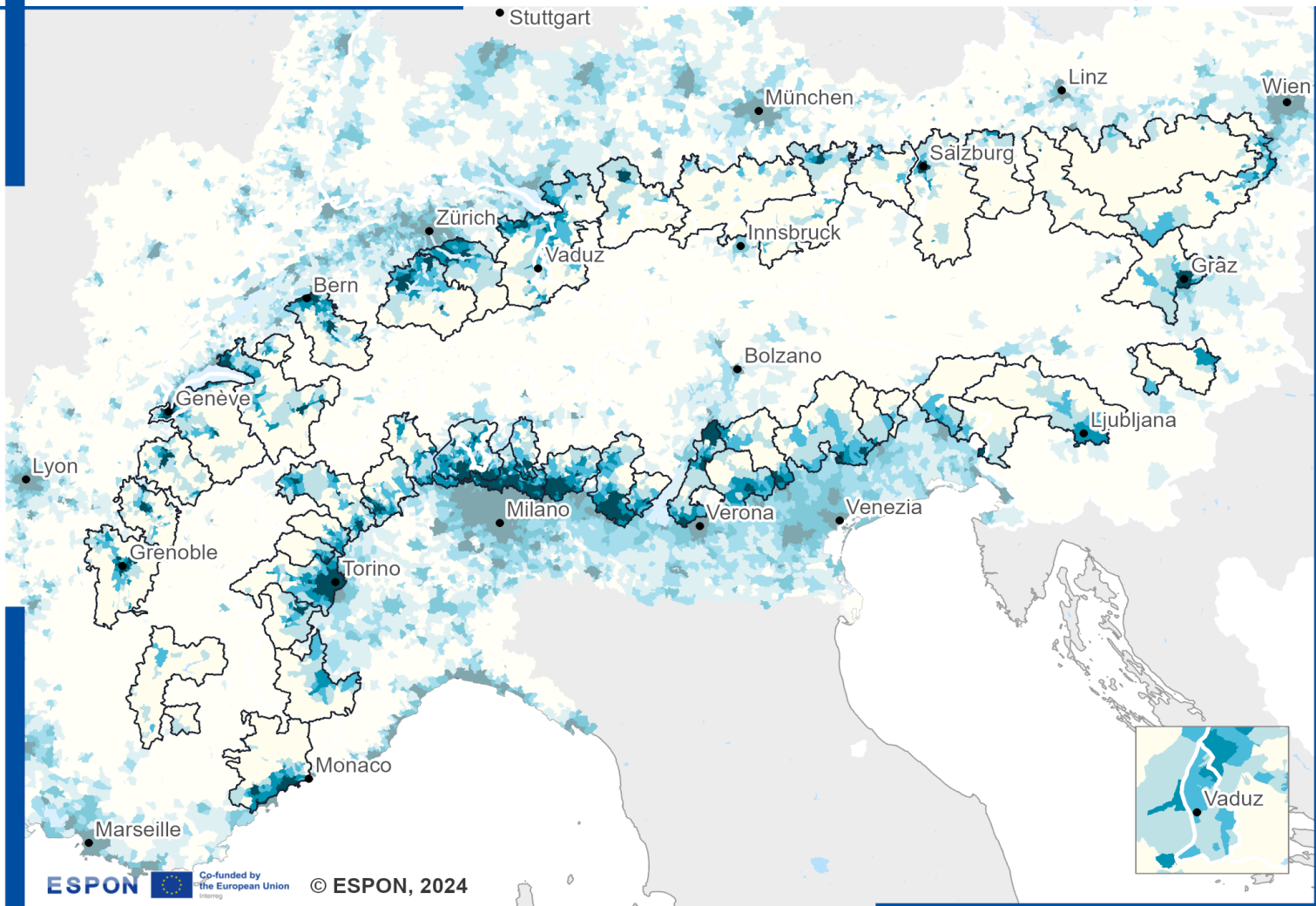


ESPON Co-funded by the European Union Interreg © ESPON, 2024

Naturalness (index)

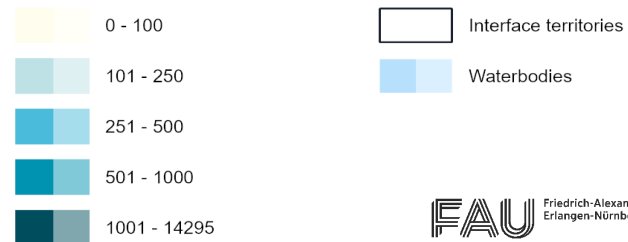


Regional level: LAU
 Source: InTerAlp, 2024
 Origin of data: Corine Land Cover, 2018
 © EuroGeographics for administrative boundaries

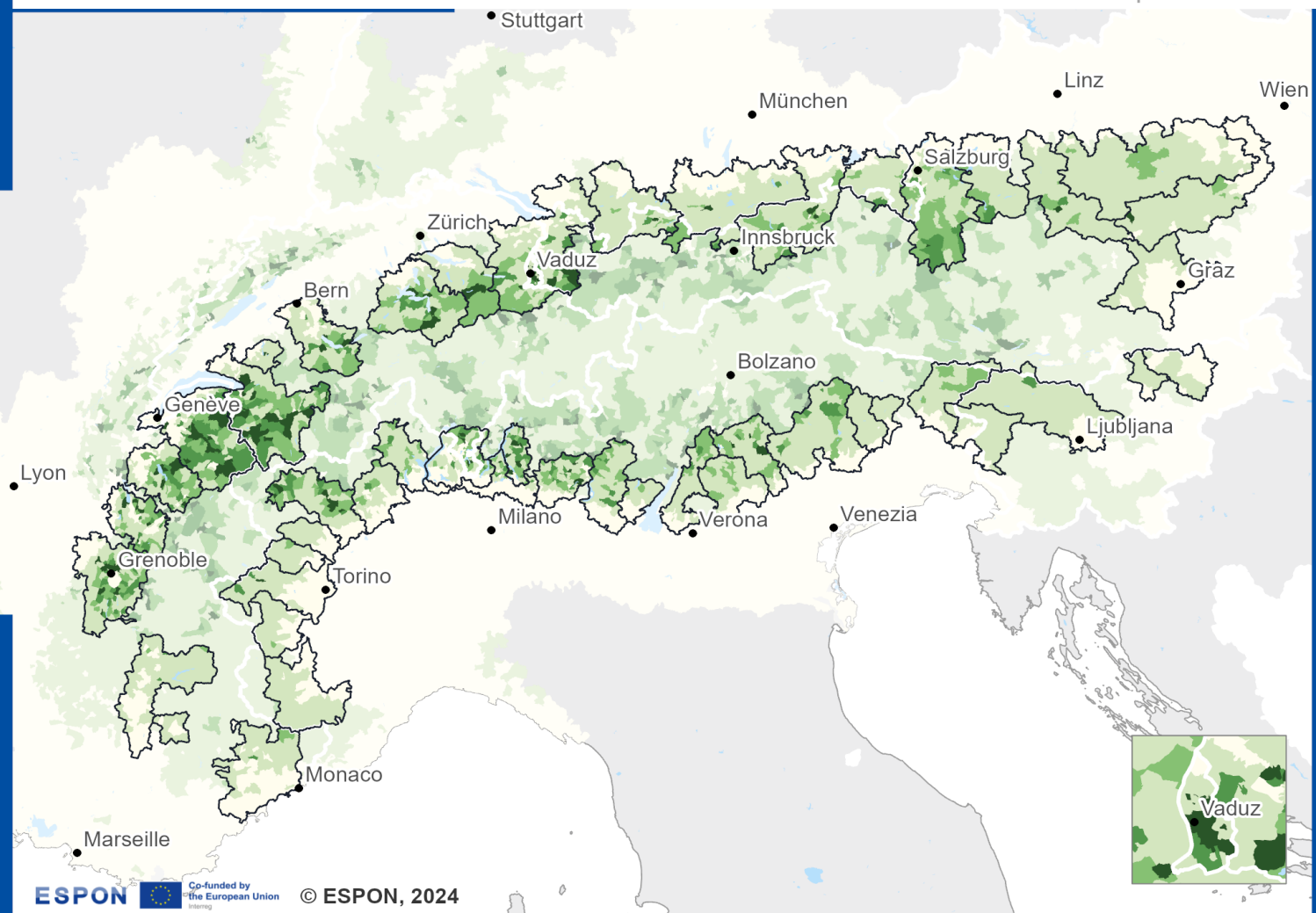


ESPON  Co-funded by the European Union Interreg © ESPON, 2024

Water abstraction ($m^3 \text{ ha}^{-1} \text{ y}^{-1}$)



Regional level: LAU
 Source: InTerAlp, 2024
 Origin of data: Project AlpES
 © EuroGeographics for administrative boundaries

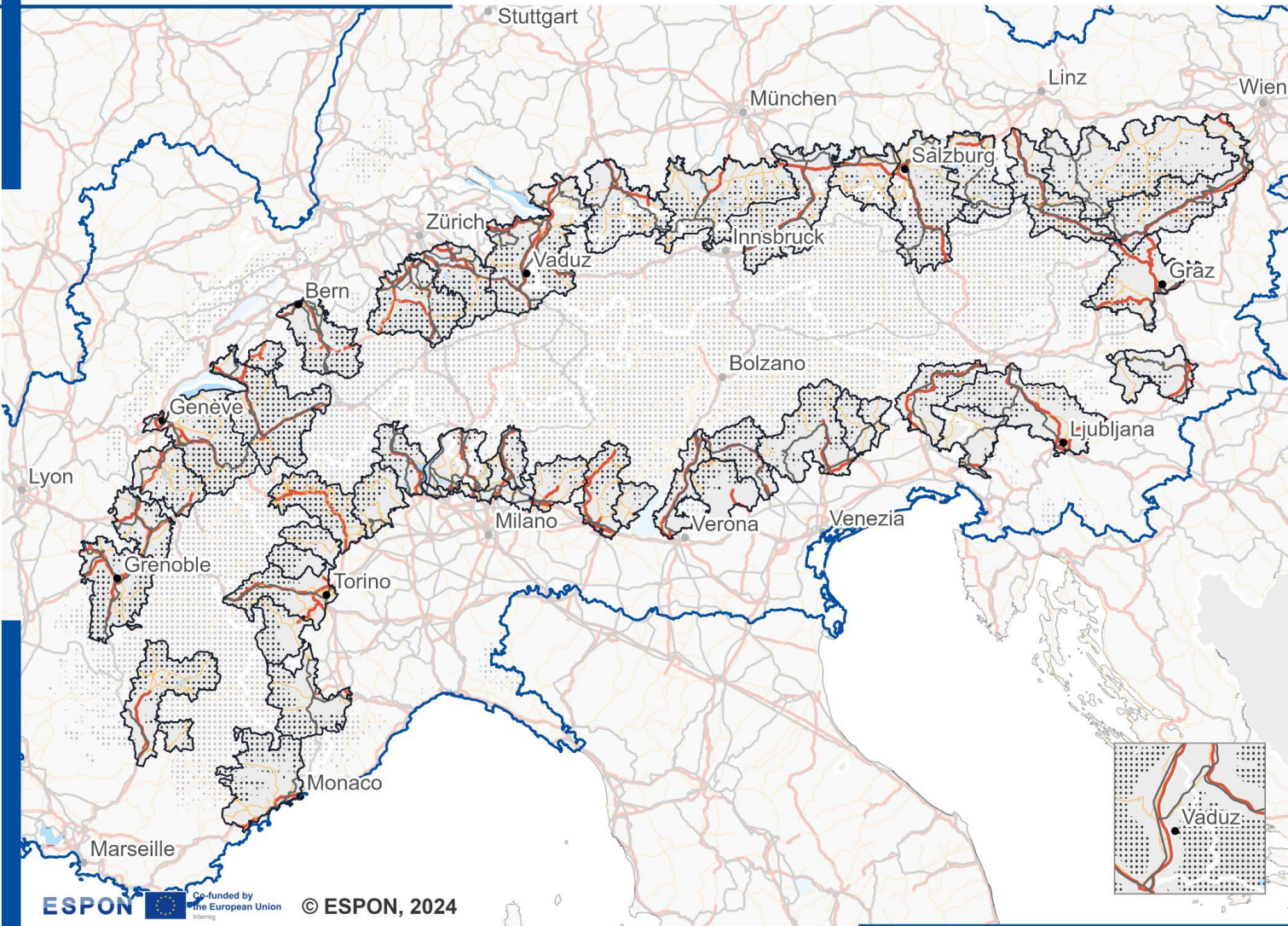


ESPON Co-funded by the European Union Interreg © ESPON, 2024







Infrastructure in hazard zones (%)



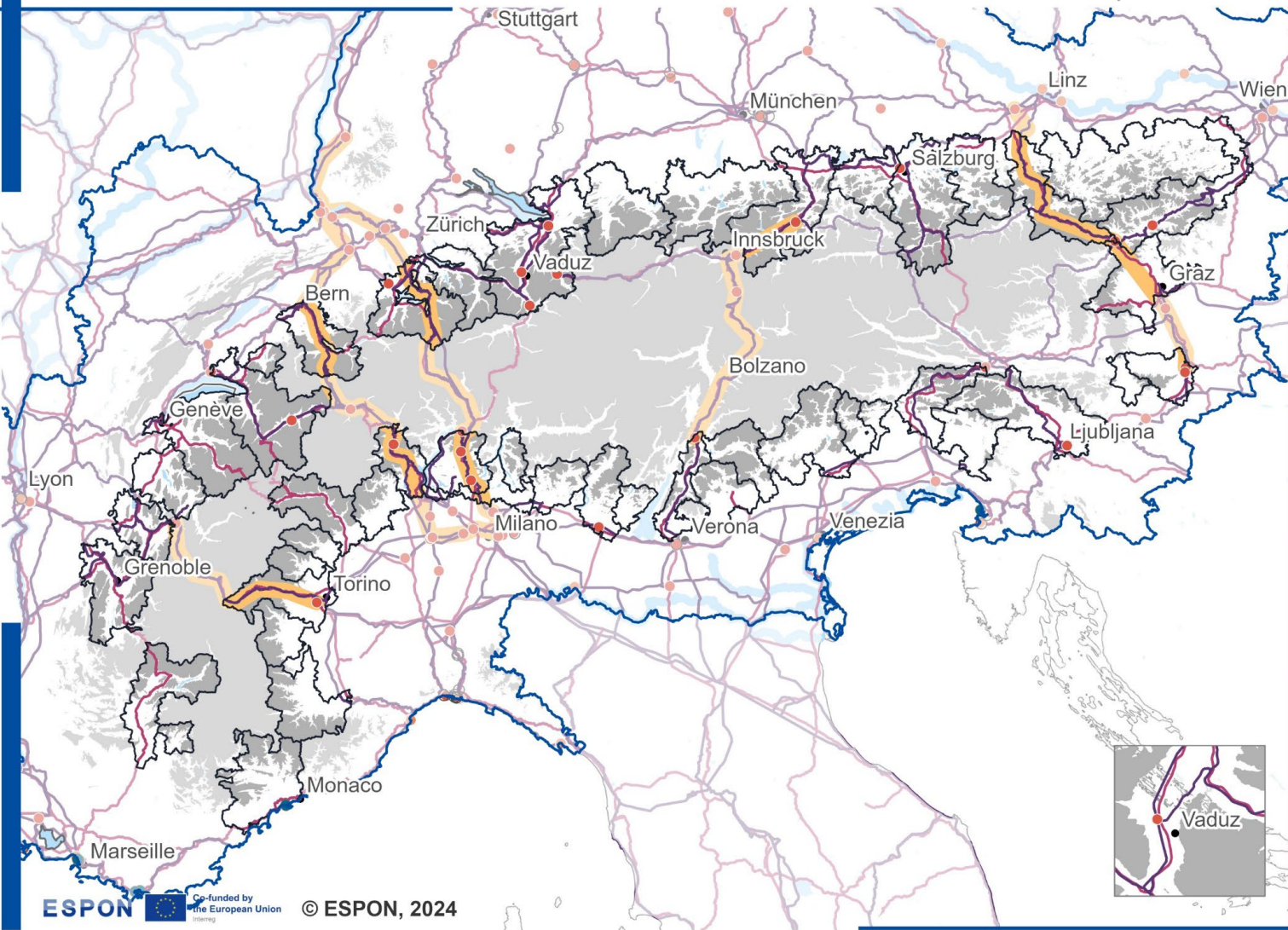
Regional level: LAU
 Source: InTerAlp, 2024
 Origin of data: Project AlpES, 2018
 © EuroGeographics for administrative boundaries



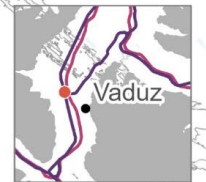
ESPON  Co-funded by the European Union Interreg © ESPON, 2024


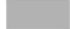

-  Interface territories
-  EUSALP
-  High altitude (≥ 1.000m a.s.l.)
-  Railway
-  National motorway
-  Primary road

Regional level: LAU 2021
 Source: ESPON InTerAlp, 2024
 Origin of data: EuroGlobalMap, 2024
 © EuroGeographics for administrative boundaries







ESPON  Co-funded by the European Union Interreg © ESPON, 2024

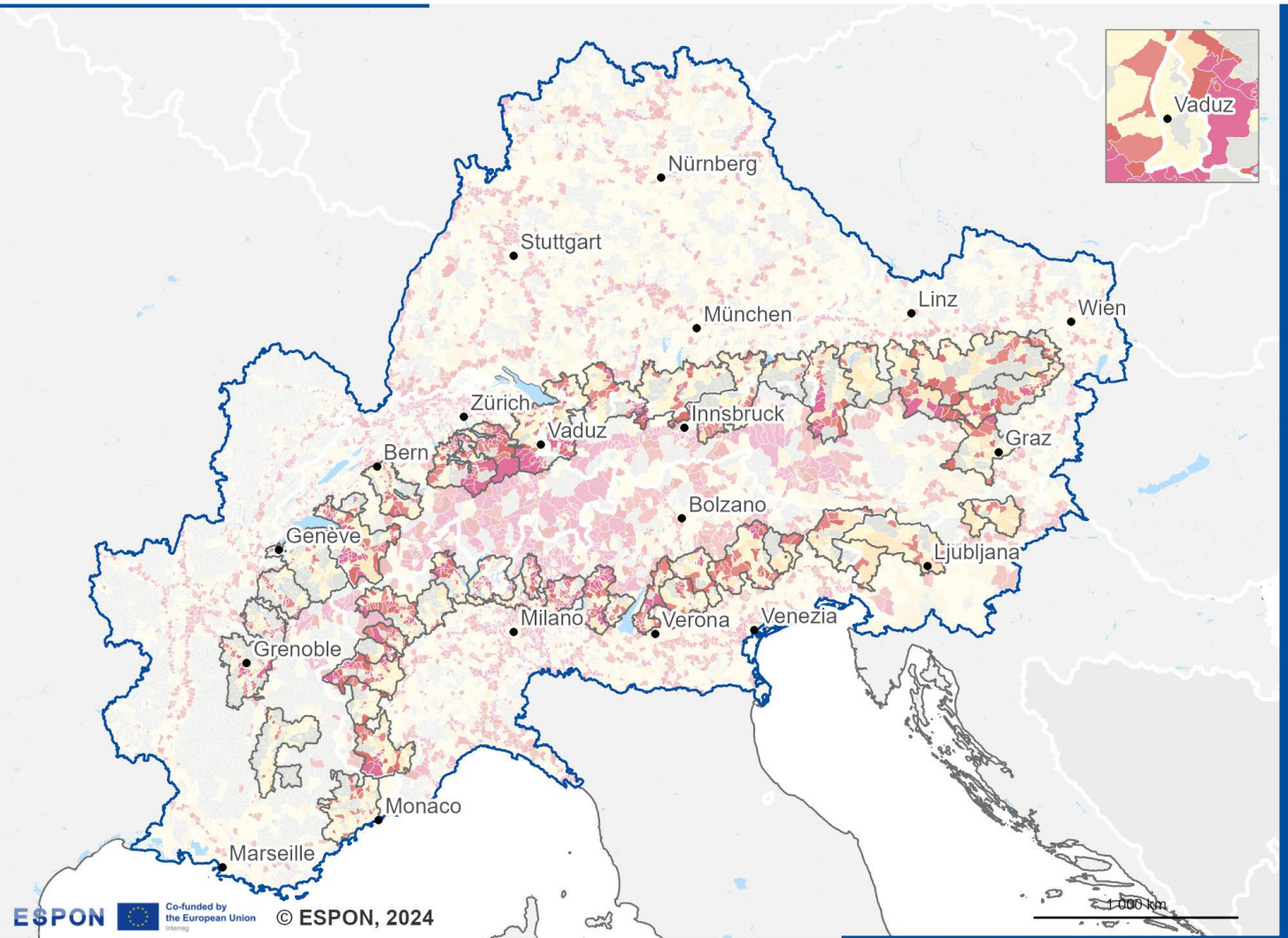


-  Interface territories
-  High altitude (≥ 1000m a.s.l.)
-  EUSALP perimeter

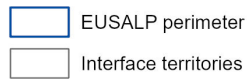
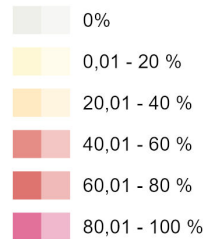
- CT terminals**
-  Trimodal
 -  Road/Rail
 -  Water/Road
 -  Container depot

- Infrastructure**
-  TEN-T road
 -  TEN-T rail
 -  Navigable river
 -  ROLA ("Rollende Landstraße")

Regional level: NUTS <level> (<version>)
 Source: <ESPON activity acronym>, <year>
 Origin of data: <data source>, <year of access>
 © EuroGeographics for administrative boundaries

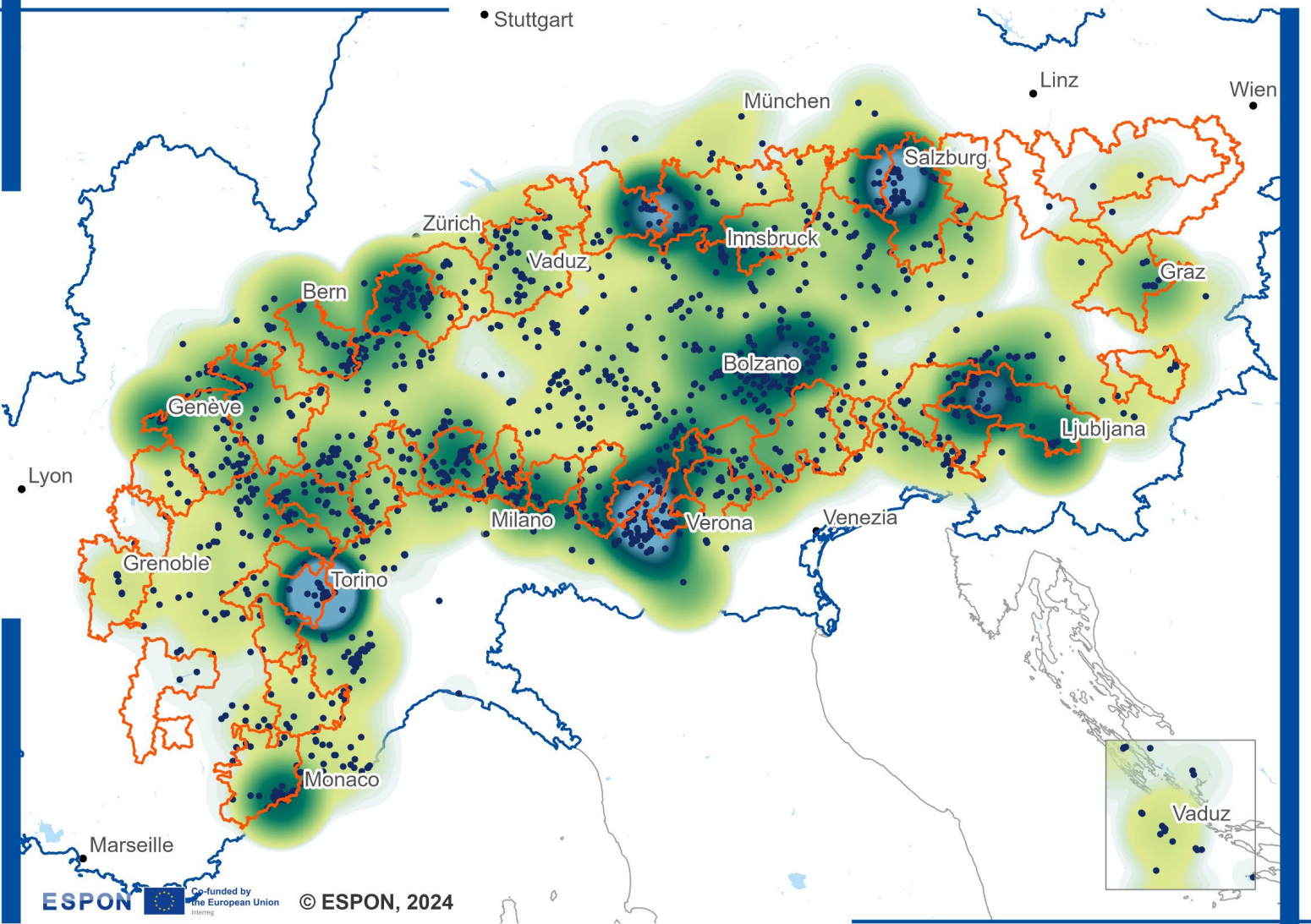


Share of population in proximity to high voltage transmission networks (500m to 1500m depending on average pole heights, 110kV to 380 kV)



Regional level: LAU
 Source: ESPON InTerAlp, 2024
 Origin of data: OpenStreetMap contributors, 2024;
 Eurostat, 2023
 © EuroGeographics for administrative boundaries

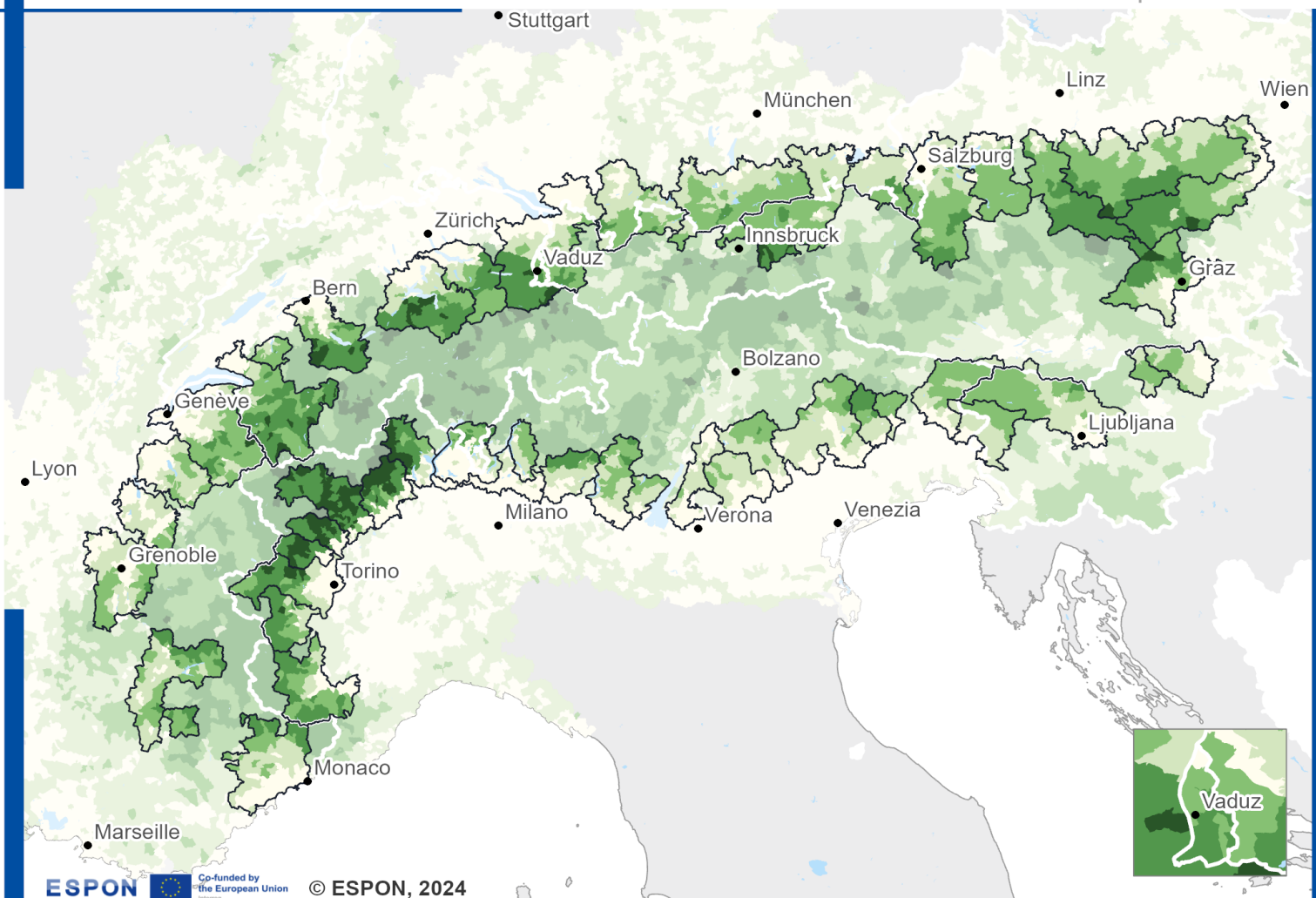
(Disclaimer: The Census 2021 grid dataset used for the calculations is provisional and under validation.)



Tourism hotspots by amount of photos uploaded on Google Maps

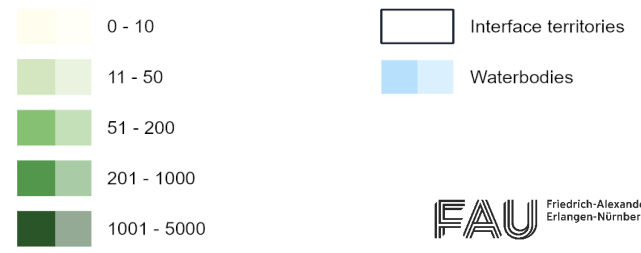
- Interface territories
 - EUSALP_perimeter
 - Tourist attraction
- Number of photos
- low
 - high

Regional level: LAU (2024)
 Source: ESPON InTerAlp, 2024
 Origin of data: Tripadvisor, Google Maps
 © EuroGeographics for administrative boundaries

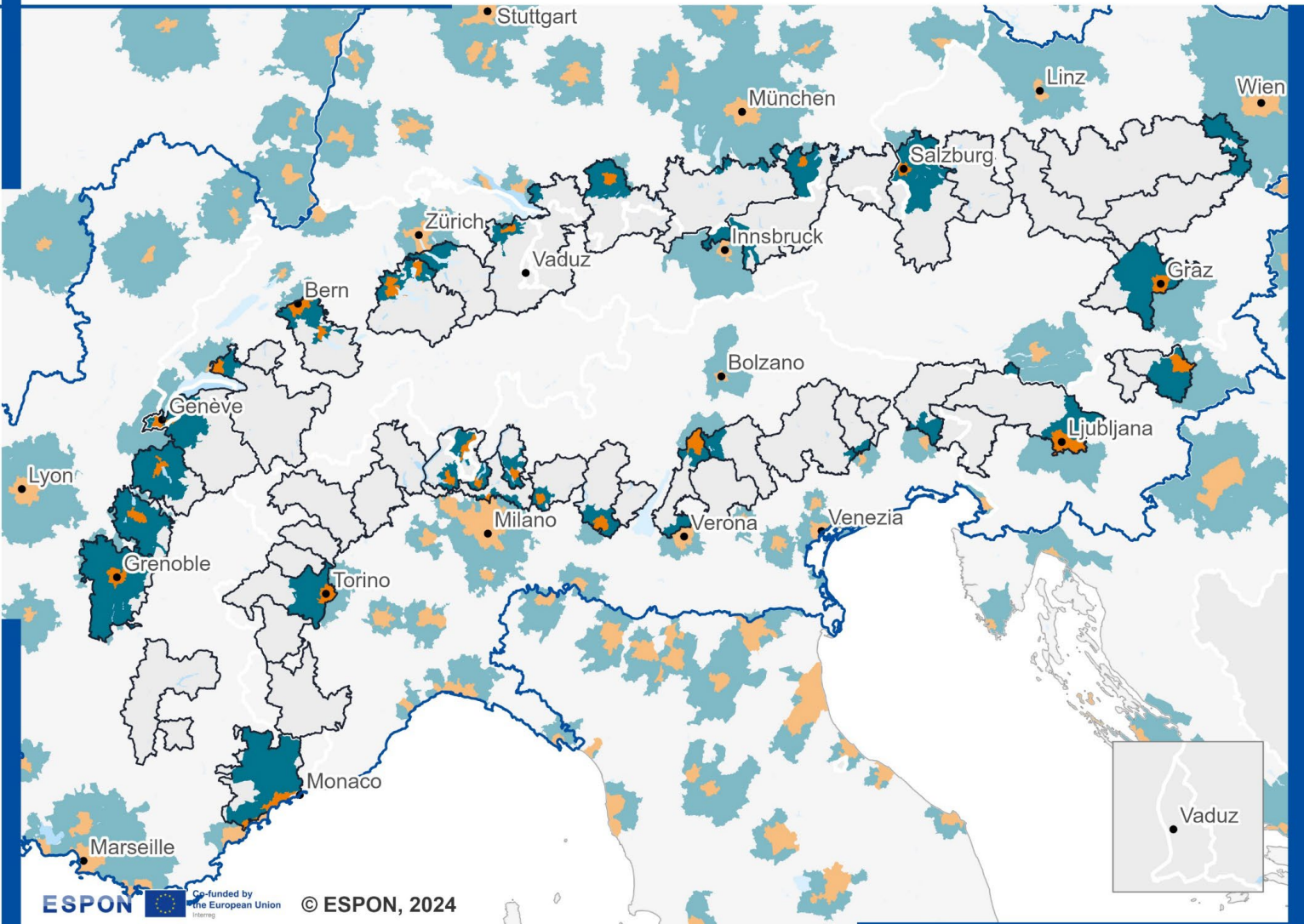


ESPON  Co-funded by the European Union Interreg © ESPON, 2024

Ecological connectivity (km²)





Regional level: LAU
 Source: InTerAlp, 2024
 Origin of data: Corine Land Cover; OpenStreetMap
 © EuroGeographics for administrative boundaries



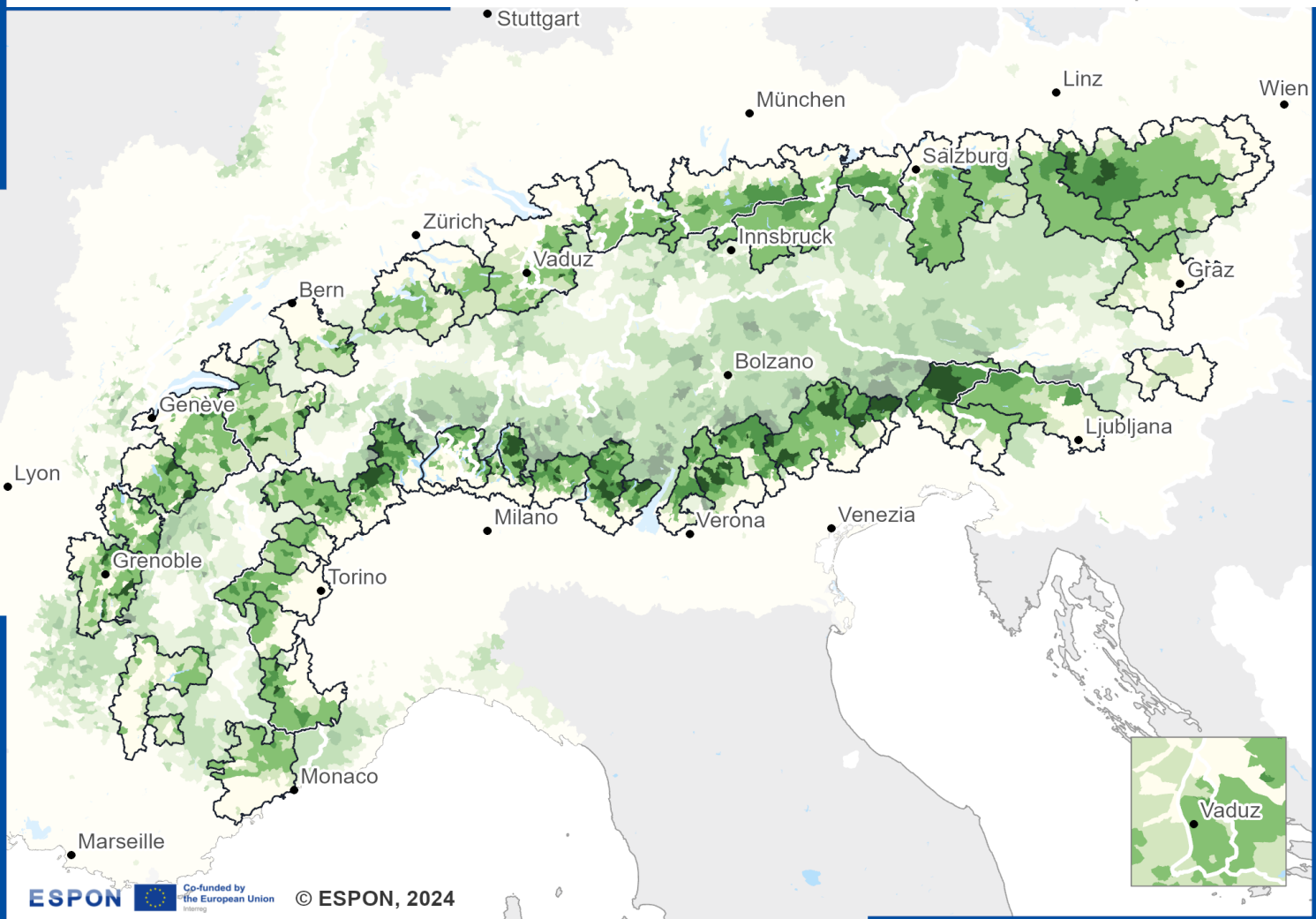
ESPON  Co-funded by the European Union Interreg © ESPON, 2024

 Interface territories
 EUSALP

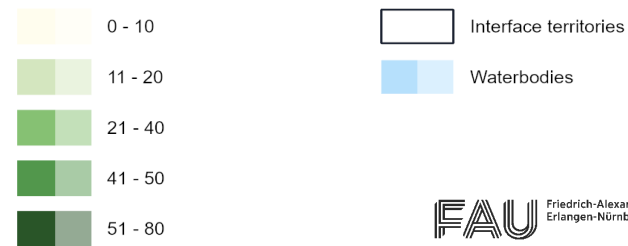
Functional Urban Areas (2021)

 City
 Commuting zone (LAUs with more than 15% of their employed population commuting to the city)

Regional level: LAU 2021
 Source: ESPON InTerAlp, 2024
 Origin of data: Eurostat
 © EuroGeographics for administrative boundaries



Site-protecting forest (%)



Regional level: LAU
 Source: InTerAlp, 2024
 Origin of data: Project AlpES, 2018
 © EuroGeographics for administrative boundaries